

# Trenwyth<sup>®</sup>

Architectural Masonry



**ECHELON™**  
Quality Masonry Products from Oldcastle\*

Distributed by

*Angelus*  
BLOCK CO., INC.  
Since 1946

TRENWYTH® ARCHITECTURAL MASONRY

# Astra-Glaze SW+®

## IDEAL APPLICATIONS

- › Institutional
- › Commercial
- › Hospital





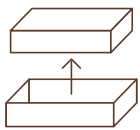
# The colorful beauty of ceramic tile. The unmatched durability of concrete.

Nearly 100 vibrant and natural-tone stock colors give you a palette of options to bring your building or focal area to life. Need a color that's uniquely yours? With Astra-Glaze SW+, we can create an exact color match for your project. Each pre-faced architectural unit features our thermoset glazing compound that's permanently molded to one or more faces for design versatility.



## DESIGNED SMARTER

Our glazing compound is cured and heat-treated in gas-fired tunnel kilns, making the surface color an integral part of each unit.



## UNIFORM FINISH

Individual molds for each glazed facing deliver dimensional uniformity, regardless of minor variations in the block.



## LASTING BEAUTY

The low-maintenance surface is graffiti-resistant, easy-to-clean, repels water and resists mold.



## SUSTAINABLE DESIGN

Astra-Glaze SW+ units contain significant pre-consumer recycled content that contribute toward the sustainable design of your building.



## LIVABILITY

All units offer fire protection and sound absorbing properties.



**PERFORMANCE  
UPGRADE OPTIONS**

> Acousta-Wal®

TRENWYTH® ARCHITECTURAL MASONRY

# Trendstone® & Trendstone Plus®

## IDEAL APPLICATIONS

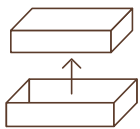
- › Institutional
- › Commercial
- › Hospital





# The striking look of aggregated stone. A colorful end effect.

If only nature could create such dynamic color combinations. Trendstone offers a palette of options that's both geographically inspired and vast. Each prefinished architectural block features one or more faces ground to create the colorful end-effect. A factory-applied clear satin gloss acrylic accentuates the natural beauty of each composite material. Trendstone Plus offers all the features of Trendstone® with the additional benefit of a smooth terrazzo finish. In addition to standard sizes, oversized units are available.



### UNIFORM FINISH

Individual molds for each glazed facing provide dimensional uniformity, regardless of minor variations in the block.



### LASTING BEAUTY

The maintenance-free surface is easy-to-clean, water-repellant and mold and moisture resistant.



### SUSTAINABLE DESIGN

Trendcoat® WB (water based) emits low VOCs\*.



### LIVABILITY

All units offer fire protection. Trendstone is also available in Acousta-Wal® sound-absorbing units.

\*Excludes textured product.



### PERFORMANCE UPGRADE OPTIONS

- > Acousta-Wal®
- > Monumental CMU
- > Filled & Polished

# START GETTING INSPIRED.

## Astra-Glaze SW+® Colors

									
Autumn Brown	Avocado	Azure Breeze	Baby Blue	Banner Red	Bimini Blue	British Fog	Burwick Blush	Buttermilk	Canella
									
Cappuccino	Caribbean Reef	Charcoal	Chelsea Pink	Cherokee Tan	Chili Pepper	Clay	Coastline	Cobalt Blue	Coffee Bean
									
Cool Cream	Copperstone	Coral Flower	Cosmic Blue	Custom Blue	Custom Gray	Custom Red	Custom Speckle	Dark Granite	Deep Marigold
									
Desert Rose	Diamond Blue	Earl Grey	Ebony	Egg Shell	Fire Engine Red	Flint	Fountain Blue	Frosted Jade	Garnet
									
Golden Honey	Green Speckle	Holly Green	Island Green	Ivory	Lavender	Lemon Peel	Light Sienna	Mahogany	Mallard Green
									
Misty Green	Moss Green	Mountain Meadow	Oatmeal	Ocean Blue	Orange Cream	Orchid Petal	Paprika	Pastel Blue	Peach Fuzz
									
Peanut Brittle	Pebble	Pewter	Pink Ice	Rain Forest	Rich Blue	Riviera	Rothwell Blue	Royal Purple	Ruby Red
									
Russet	Safari Beige	Sand	Sapphire	Sea Green	Sedona Clay	Shamrock Green	Silk Green	Silver Gray	Snow White
									
Soft Rose	Sunbath	Sunflower	Teal	Terra Cotta	Ultra Blue	Valley Forge Blue	Vanilla	Viking Red	Vivid Red
									
Warm Spice	Wheatfield	Whitman White	Wild Mushroom	Willow Leaf Green					

Note: All color swatches are representative only. For accurate color selection, ask your sales representative for samples.

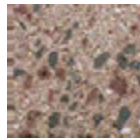


## Trendstone® (West Region Colors)

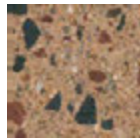
---



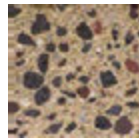
Anthem Red



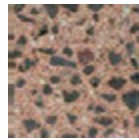
Autumn



Ballpark Buff



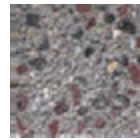
Berkeley



Beverly Spice



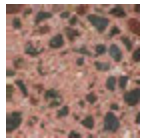
Black Canyon



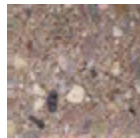
Black Mountain



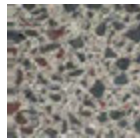
Durango



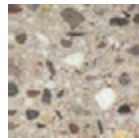
Fuego Red



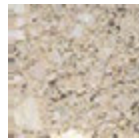
Hopi Sandstone



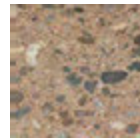
Huntington Gray



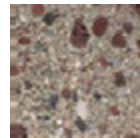
Malibu Sand



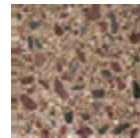
Mission White



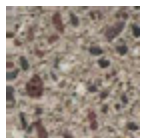
Modesto



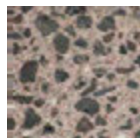
Mojave Brown



Monterey Stone



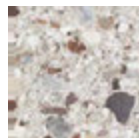
MW Bone



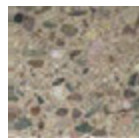
Newport



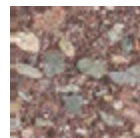
Papago Red



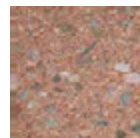
Pearl



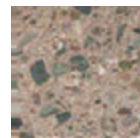
Pebble Beach



Purple Hart



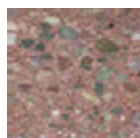
Red Rock



Riverside



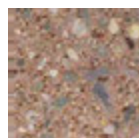
Rutherford



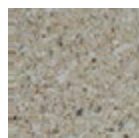
San Mateo



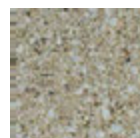
Seashell



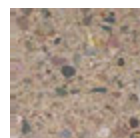
Showlow  
Sunset



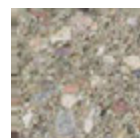
Sierra



Southwest Gold



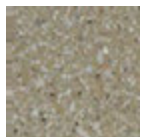
Walnut Creek



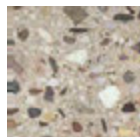
Willow Green

## Trendstone Plus® (West Region Colors)

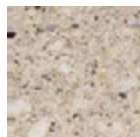
---



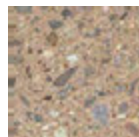
Durango



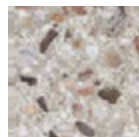
Malibu Sand



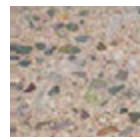
Mission White



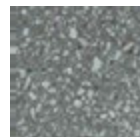
Modesto



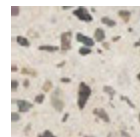
Pearl



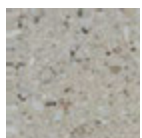
Riverside



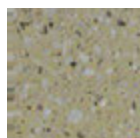
Rutherford



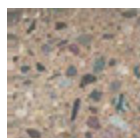
Seashell



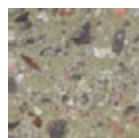
Sierra



Southwest Gold



Walnut Creek



Willow Green

**Note:** All color swatches are representative only. For accurate color selection, ask your sales representative for samples.

Distributed by

*Angelus*  
BLOCK CO., INC.  
Since 1946

Contact your Angelus Block representative for more  
information and product samples or visit  
[www.AngelusBlock.com](http://www.AngelusBlock.com)



**WARNING:** This product can expose you to Silica, crystalline (airborne particles of respirable size) which is known to the State of California to cause cancer. For more information go to [www.P65Warnings.ca.gov](http://www.P65Warnings.ca.gov).

 **Oldcastle**® Architectural

Oldcastle  
900 Ashwood Parkway, Suite 600  
Atlanta, GA 30338  
844.495.8211  
[EchelonMasonry.com](http://EchelonMasonry.com)

© 2016 Oldcastle. Echelon is a registered trademark of Oldcastle. Oldcastle Architectural is a registered trademark of Oldcastle. All rights reserved. ECH15-008