

# Pattern & Shadow

## CMU for Dynamic Light, Shade, and Visual Effect

Daylight is not static. Its influence on our perception of color, texture, shape, and volume is progressive and cyclical.

Incidental or extraordinary, the play of light and shadow may be sculpted right out of the space and functional programming of a project's basic purposes.

Angelus Block's Pattern & Shadow collection extends the designer's palette with concrete masonry units that provide visual depth, weight, embossing, graphic attraction, and a discourse with highlight and shade unfolding throughout the day.

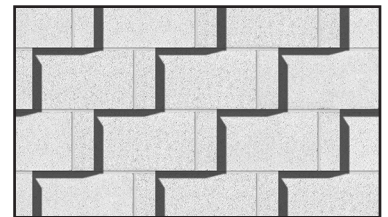
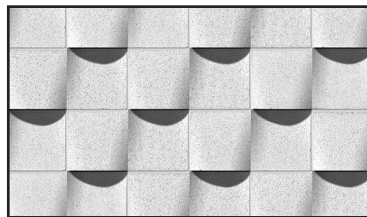
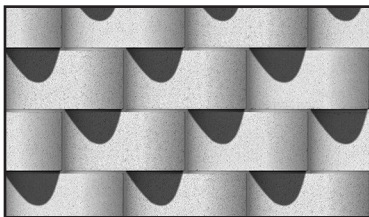
Among the most dramatic shapes are those in The Pixel Block series, with remarkable outside-the-box designs.

**The Pixel Blocks..... 2**  
 Sine  
 Ripple  
 Spade

**Projection and Shadow..... 3**  
 Hi-Lite Mark I  
 Hi-Lite Mark II  
 Shadow Block  
 Projected Block  
 Slope Face 1-Inch  
 Facet  
 Castle Rock Split

**Deep Scores and Flutes..... 5**  
 Precision Deep Scores & Flutes  
 Split Face Deep Scores & Flutes  
 Split Ribs

**Graphic Scores ..... 7**  
 Precision Vertical and Multi-Scores  
 Split Face 1-Score



For current product information and the full range of available units and configurations, please visit [www.AngelusBlock.com](http://www.AngelusBlock.com)

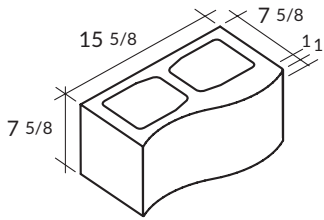
# The Pixel Blocks<sup>1</sup>

Let your creativity breathe outside the box. Put a decidedly unconventional face on a workhorse of a wall.

## SPECIAL ORDER ONLY

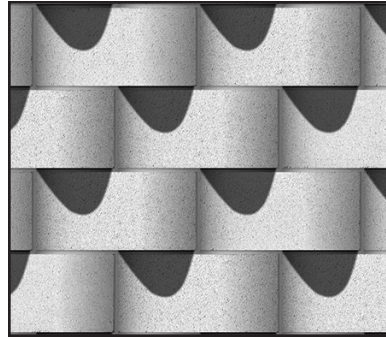
Cores and ends as shown are representative only. Consult your Angelus Block representative for available core and end configurations, sizes, and optional layouts.

The Pixel Blocks are manufactured in Precision texture.

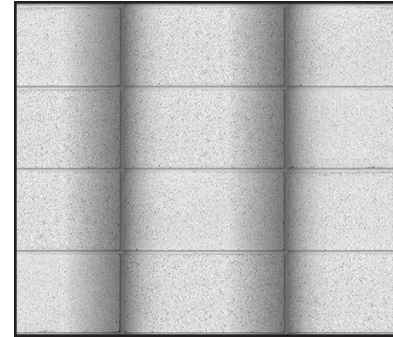


**8x8x16  
Sine Block**

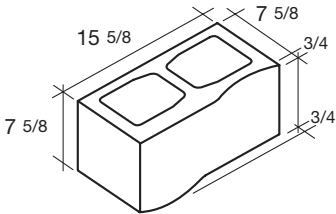
Corner units not available for this item. Please contact your Angelus Block representative for detailing.



Sine Block Layout A - Running Bond

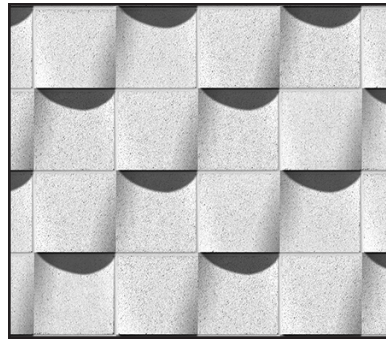


Sine Block Layout A - Stack Bond

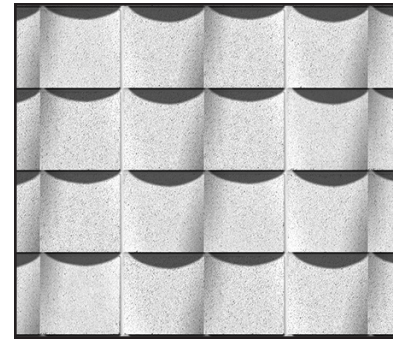


**8x8x16  
Ripple Block**

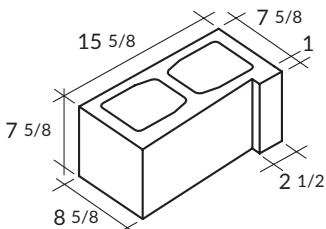
Corner units not available for this item. Please contact your Angelus Block representative for detailing.



Ripple Block - Running Bond

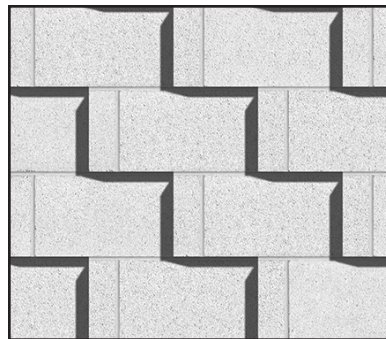


Ripple Block - Stack Bond

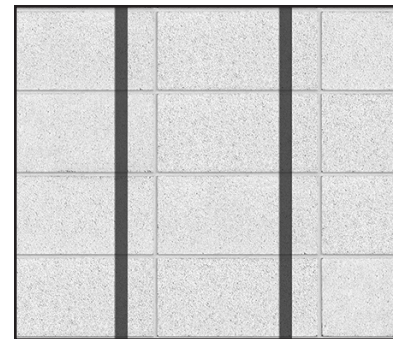


**8x8x16  
Spade Block**

Corner units not available for this item. Please contact your Angelus Block representative for detailing.



Spade Block- Running Bond



Spade Block- Stack Bond

<sup>1</sup>The Pixel Blocks were developed by LOOM, an art, architecture, and design collaborative based in St. Paul, Minnesota; [www.loomstudio.com](http://www.loomstudio.com). Ralph Nelson, principal, was a primary investigator in 12 Blocks, a research project that led to the evolution of The Pixel Blocks. The Pixel Blocks are fully copyrighted and patent pending in their entirety. ©2009 LOOM P.A.

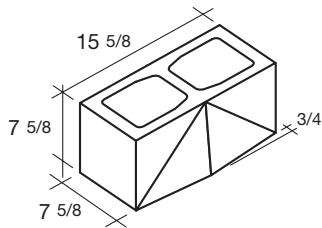
# Projection & Shadow

Popouts, angles, and overhangs enliven walls with contrasts of highlights and shade. Use them as individual units for accent, or in fields for pattern and texture.

**SPECIAL ORDER ONLY**

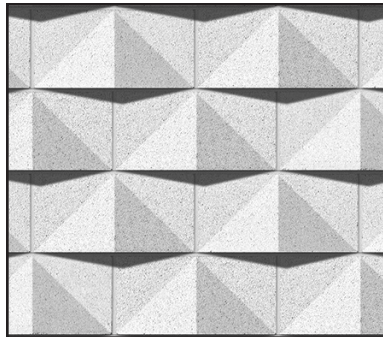
Cores and ends as shown are representative only. Consult your Angelus Block representative for available core and open end configurations, sizes, and optional layouts.

Units in this section are manufactured in either Precision or Split Face textures as indicated.

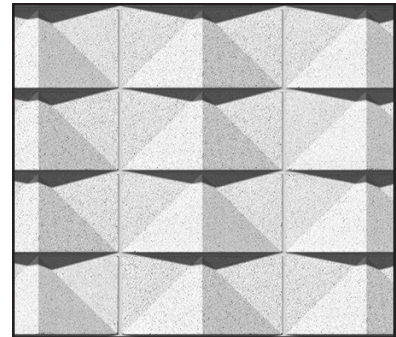


**8x8x16  
Hi-Lite Mark I**

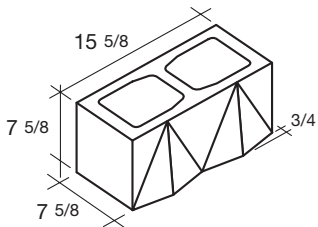
Also available in 6x8x16, 10x8x16, and 12x8x16  
Corner units not available for this item.  
Please contact your Angelus Block representative for detailing.



Hi-Lite Mark I - Running Bond

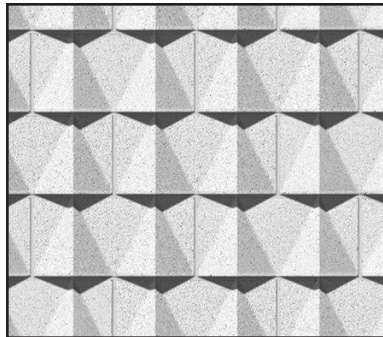


Hi-Lite Mark I - Stack Bond

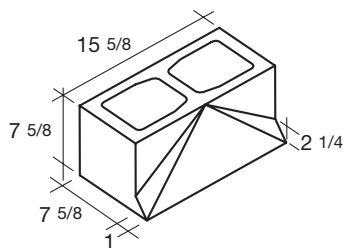


**8x8x16  
Hi-Lite Mark II**

Also available in 6x8x16 and 12x8x16  
Corner units not available for this item.  
Please contact your Angelus Block representative for detailing.

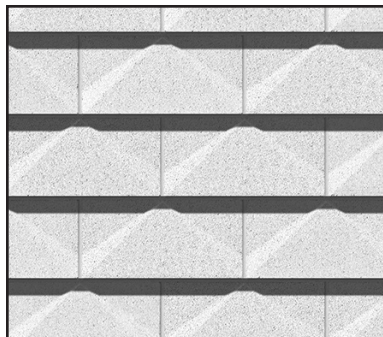


Hi-Lite Mark II - Running Bond

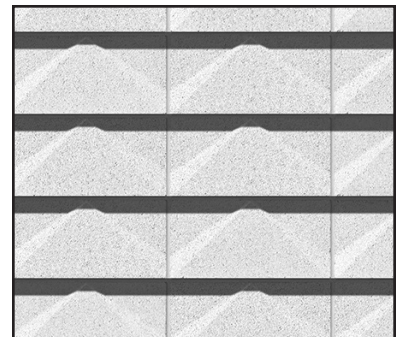


**8x8x16  
Shadow Block**

Also available in 12x8x16  
Corner units not available for this item.  
Please contact your Angelus Block representative for detailing.

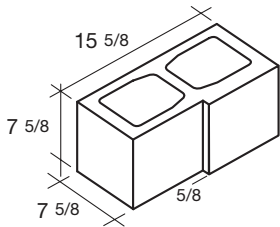


Shadow Block - Running Bond



Shadow Block - Stack Bond

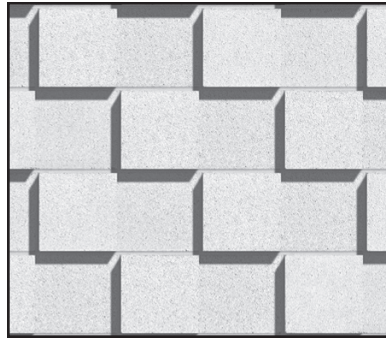




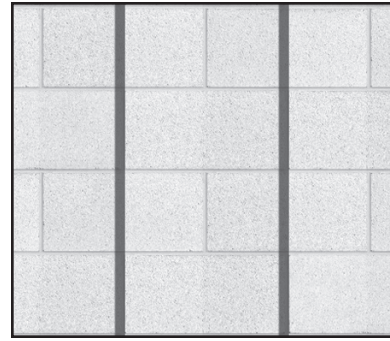
**8x8x16  
Projected Block**

Also available in 10x8x16 and 12x8x16

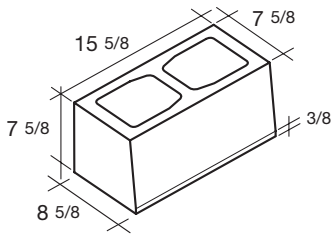
Corner units not available for this item.  
Please contact your Angelus Block  
representative for detailing.



**Projected Block- Running Bond**



**Projected Block- Stack Bond**



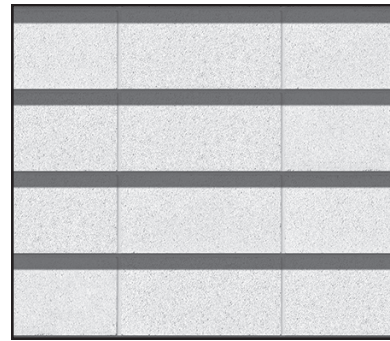
**8x8x16  
Slope Face 1-Inch**

Also available in 12x8x16

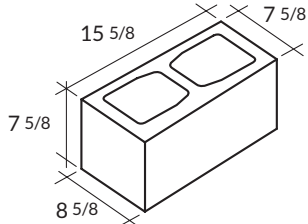
Corner units available for 8x8x16 and  
12x8x16 units.



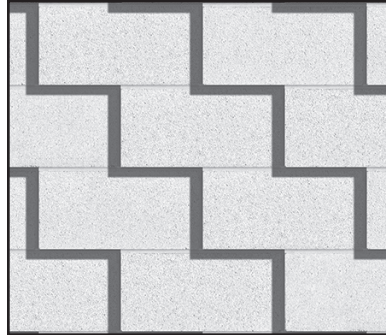
**Slope Face 1-Inch - Running Bond**



**Slope Face 1-Inch - Stack Bond**



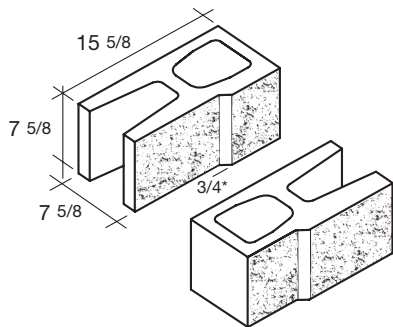
**8x8x16  
Facet**



**Facet - Running Bond**



**Facet - Stack Bond**



**8x8x16  
Castle Rock  
Offset Split Face Package**

Also available in 10x8x16 and 12x8x16

\*Varies with random split depth.



**Castle Rock - Running Bond**

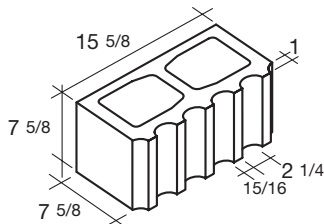
# Deep Scores & Flutes

Add relief and depth of texture to fields and bands; create visual anchoring to lower elevations or striking accent to top of walls.

## SPECIAL ORDER ONLY

Cores and ends as shown are representative only. Consult your Angelus Block representative for available core and open end configurations, sizes, and optional layouts.

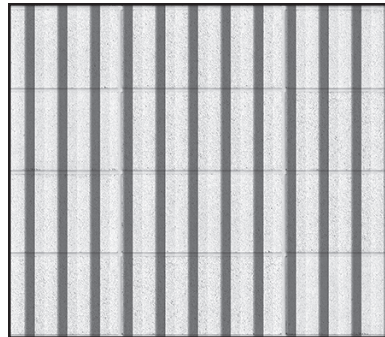
Units in this section are manufactured in either Precision or Split Face textures as indicated.



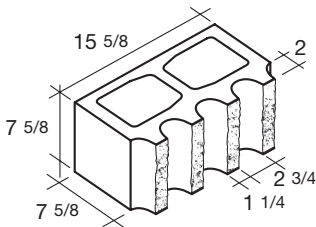
**8x8x16  
5-Flute Precision**

Also available in 12x8x16

Corner units not available for this item. Please contact your Angelus Block representative for detailing.

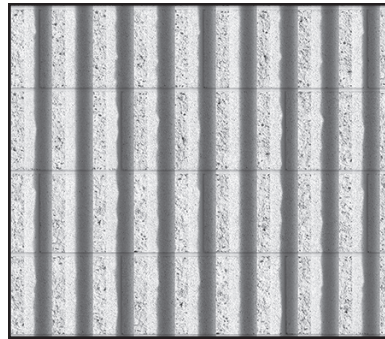


**5-Flute Precision - Stack Bond**

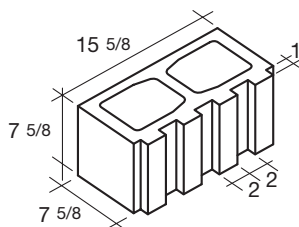


**8x8x16  
4-Flute Split**

Also available in 12x8x16

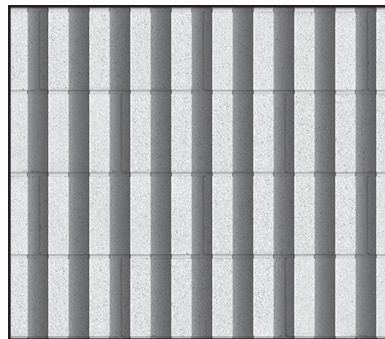


**4-Flute Split - Running Bond**



**8x8x16  
4-Score 2x1 Precision**

Also available in 12x8x16

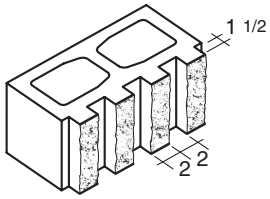


**4-Score 2x1 Precision - Running Bond**

### NOTES RELATED TO SPLIT TEXTURE:

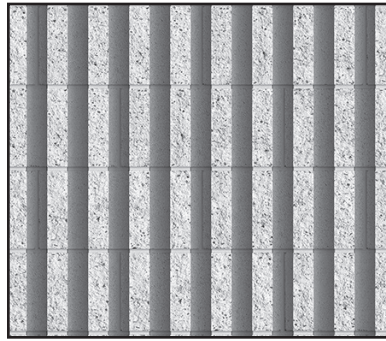
**Aggregate exposure** in all scored split units is affected by the molding process resulting in little to none of the larger aggregates exposed near the top of the unit (as manufactured). It is typically unnoticeable within the overall field of a completed wall.

**Split face dimensions**, for the face that is split, is not considered in Permissible Variations of ASTM C90, as split faces inherently vary. Only precision, non-split faces are held to the tolerances.

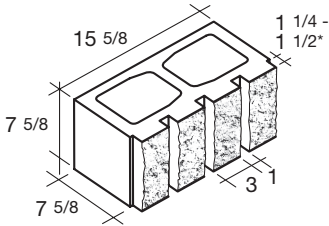


**8x8x16  
4-Score 2x1 Split**

Also available in 10x8x16 and 12x8x16



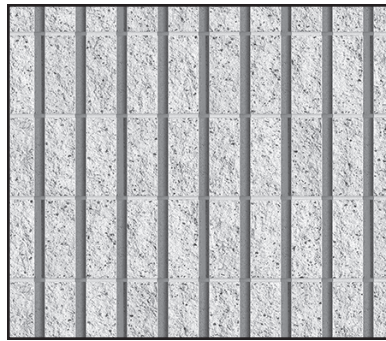
**4-Score 2x1 Split - Running Bond**



**8x8x16  
4-Score Split**

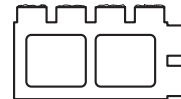
Also available in 10x8x16 and 12x8x16

\*May differ by plant.

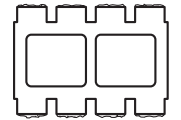


**4-Score Split - Running Bond**

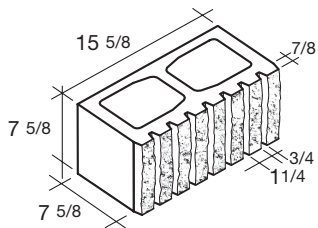
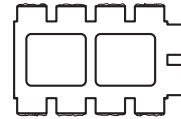
4-Score Split  
1-Side 1-End



4-Score Split  
2-Sides



4-Score Split  
2-Sides 1-End



**8x8x16  
7-Rib Split**

Also available in 4x8x16 Solid, 6x8x16, 8x8x16 1-Side 1-End, and 12x8x16 1-Side units



**7-Rib Split - Running Bond**

**NOTES RELATED TO SPLIT TEXTURE:**

**Aggregate exposure** in all scored split units is affected by the molding process resulting in little to none of the larger aggregates exposed near the top of the unit (as manufactured). It is typically unnoticeable within the overall field of a completed wall.

**Split face dimensions**, for the face that is split, is not considered in Permissible Variations of ASTM C90, as split faces inherently vary. Only precision, non-split faces are held to the tolerances.

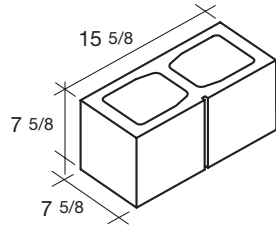


# Graphic Scores

Vertical scores, 3/8-inch wide, simulate raked joints. Grid patterns to strong vertical hash-lined fields and bands provide graphical accents and visual contrast.

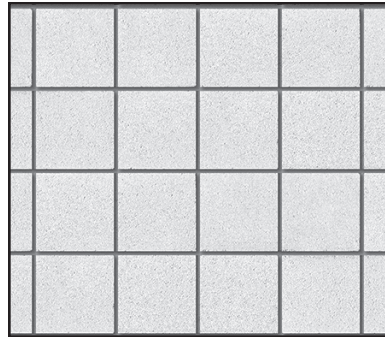
**SPECIAL ORDER ONLY**

Cores and ends as shown are representative only. Consult your Angelus Block representative for available core and open end configurations, sizes, and optional layouts.

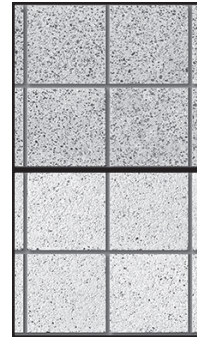


**8x8x16**  
**1-Score Precision**

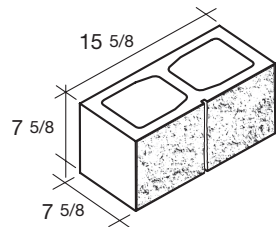
Also available in 4, 6, 10, 12, and 16-inch widths.



**Vertical Score Precision**  
**Running Bond**

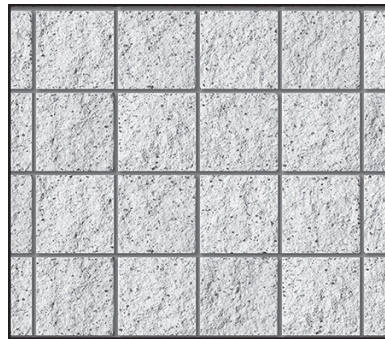


**Burnished and**  
**Shotblast**  
**Textures Available**



**8x8x16**  
**1-Score Split**

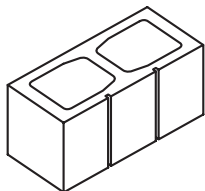
Also available in 6, 10, and 12-inch widths.



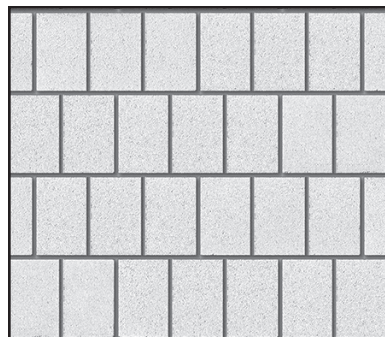
**Vertical Score Split - Running Bond**

Variation of the score in split units is a possibility. Score alignment is subject to angular movement off its vertical axis. The bar forming the score is extremely small relative to weight of material and force of vibration in the manufacturing cycle.

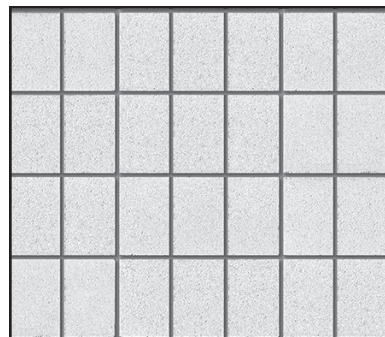
Score exposure may be affected by normal split variation. A split breaking inward may extend to the depth of the score, negating some of its visual effect. The degree of variation, if it occurs at all, cannot be known until after units are manufactured, cured, and split. Therefore, no claims will be allowed for variations of score alignment or exposure.



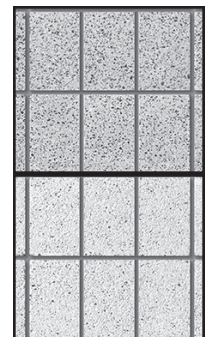
**8x8x16**  
**2-Score Precision**



**2-Score Precision - Running Bond**



**2-Score Precision - Stack Bond**

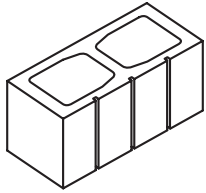


**Burnished and**  
**Shotblast**  
**Textures Available**

**NOTES RELATED TO SPLIT TEXTURE:**

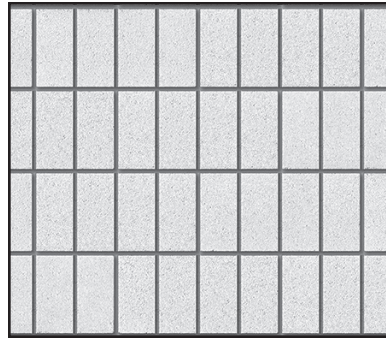
**Aggregate exposure** in all scored split units is affected by the molding process resulting in little to none of the larger aggregates exposed near the top of the unit (as manufactured). It is typically unnoticeable within the overall field of a completed wall.

**Split face dimensions**, for the face that is split, is not considered in Permissible Variations of ASTM C90, as split faces inherently vary. Only precision, non-split faces are held to the tolerances.

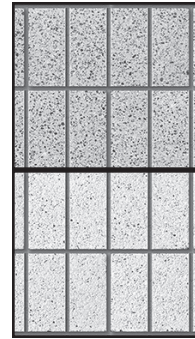


**8x8x16  
3-Score Precision**

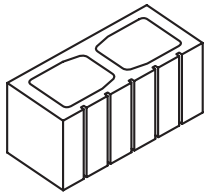
Also available in 10x8x16 and 12x8x16



**3-Score Precision - Running Bond**

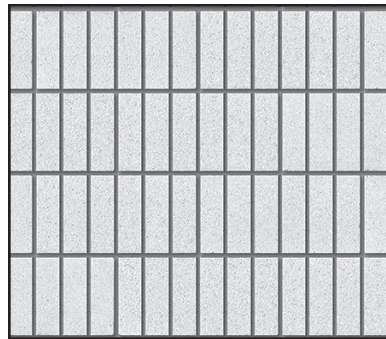


**Burnished and  
Shotblast  
Textures Available**



**8x8x16  
5-Score Precision**

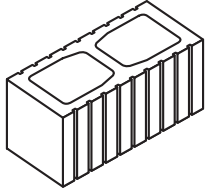
Also available in 10x8x16 and 12x8x16



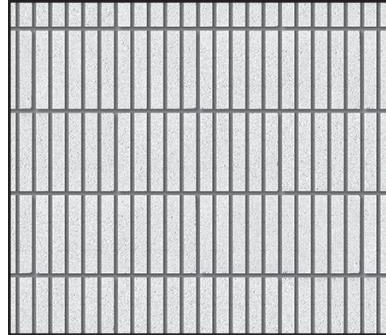
**5-Score Precision - Running Bond**



**Burnished and  
Shotblast  
Textures Available**



**8x8x16  
9-Score Precision**



**9-Score Precision - Running Bond**



[www.AngelusBlock.com](http://www.AngelusBlock.com)    [info@AngelusBlock.com](mailto:info@AngelusBlock.com)

©2024 Angelus Block Co., Inc.

The information herein is true and correct to the best of our knowledge but is subject to amendment or correction at any time, without notice. Angelus Block Co., Inc. does not assume responsibility or liability, including liability for negligence, for errors or omissions in this information or in its use in the preparations of architectural or engineering plans or specifications.