

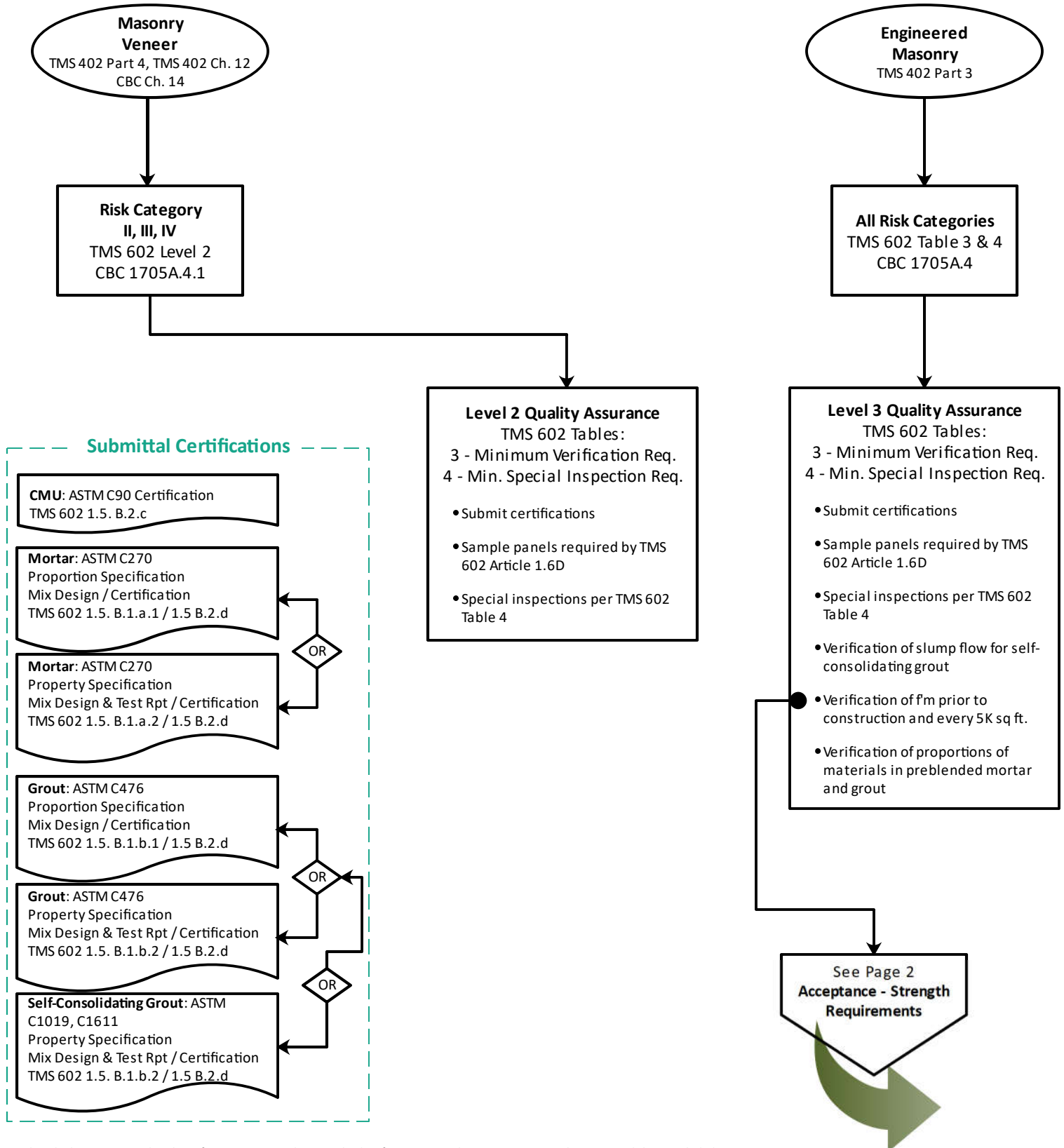
# Quality Assurance - Masonry Material Submittals and Testing

CBC: 2022 California Building Code (DSA-SS; OSHPD 1 AND 4; OSHPD 1R, 2 and 5; DSA-SS/CC)

TMS 402: 2016 Building Code Requirements for Masonry Structures and Commentary

TMS 602: 2016 Specification for Masonry Structures and Commentary

NOTE: 2022 CBC Chapter 21 also contains sections related to quality assurance that are specific to OSHPD 1R, 2 and 5, and DSA-SS/CC. As those references have similarities to DSA and OSHPD requirements in Chapter 21A, they are included here.



# Quality Assurance - Masonry Material Submittals and Testing

CBC: 2022 California Building Code

TMS 402: 2016 Building Code Requirements for Masonry Structures and Commentary

TMS 602: 2016 Specification for Masonry Structures and Commentary

(DSA-SS; OSHPD 1 AND 4; OSHPD 1R, 2 and 5; DSA-SS/CC)

