

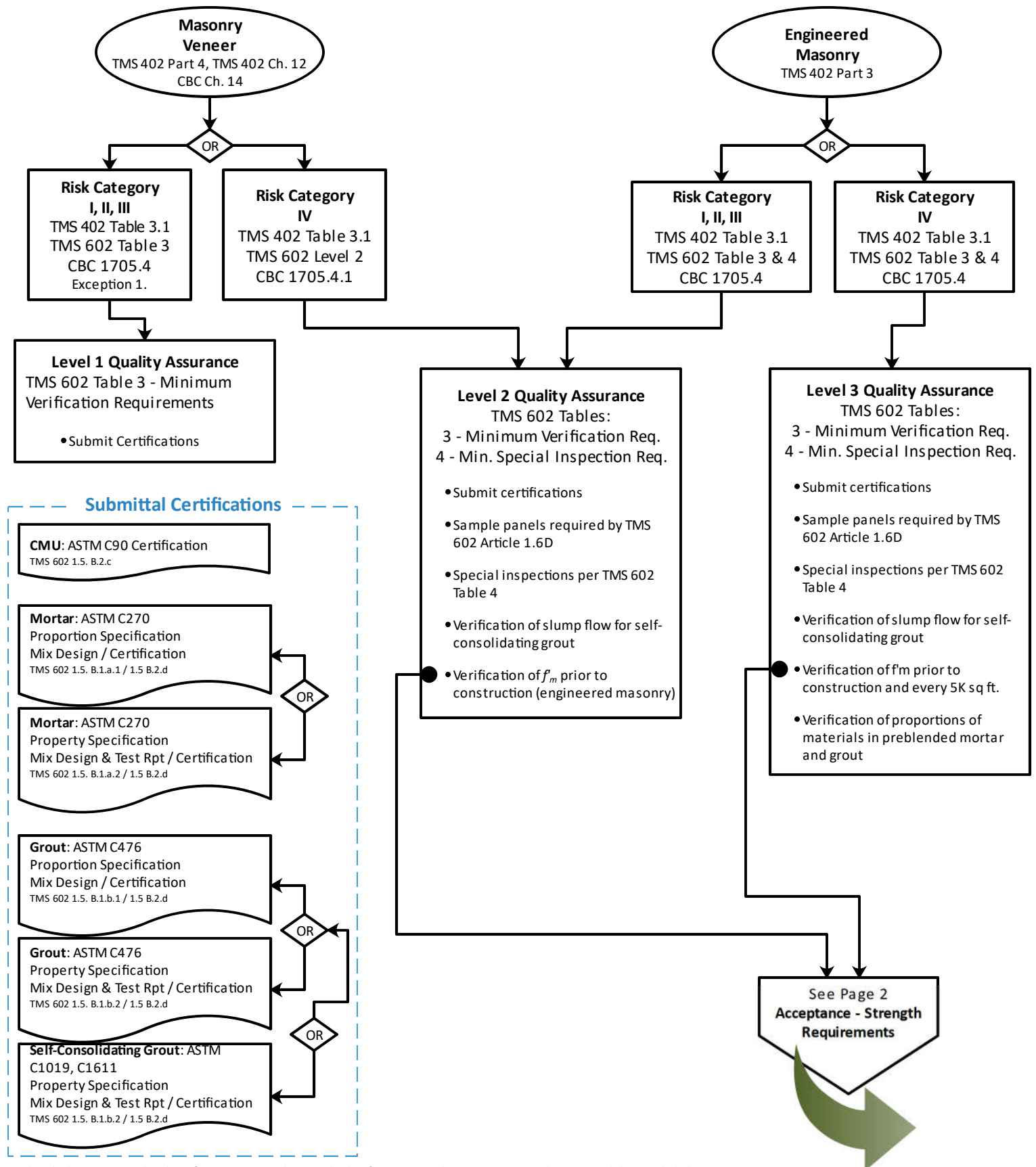
Quality Assurance - Masonry Material Submittals and Testing

CBC: 2022 California Building Code

TMS 402: 2016 Building Code Requirements for Masonry Structures and Commentary

TMS 602: 2016 Specification for Masonry Structures and Commentary

See note on page 2 regarding OSHPD and DSA modifications to CBC Chapter 21.





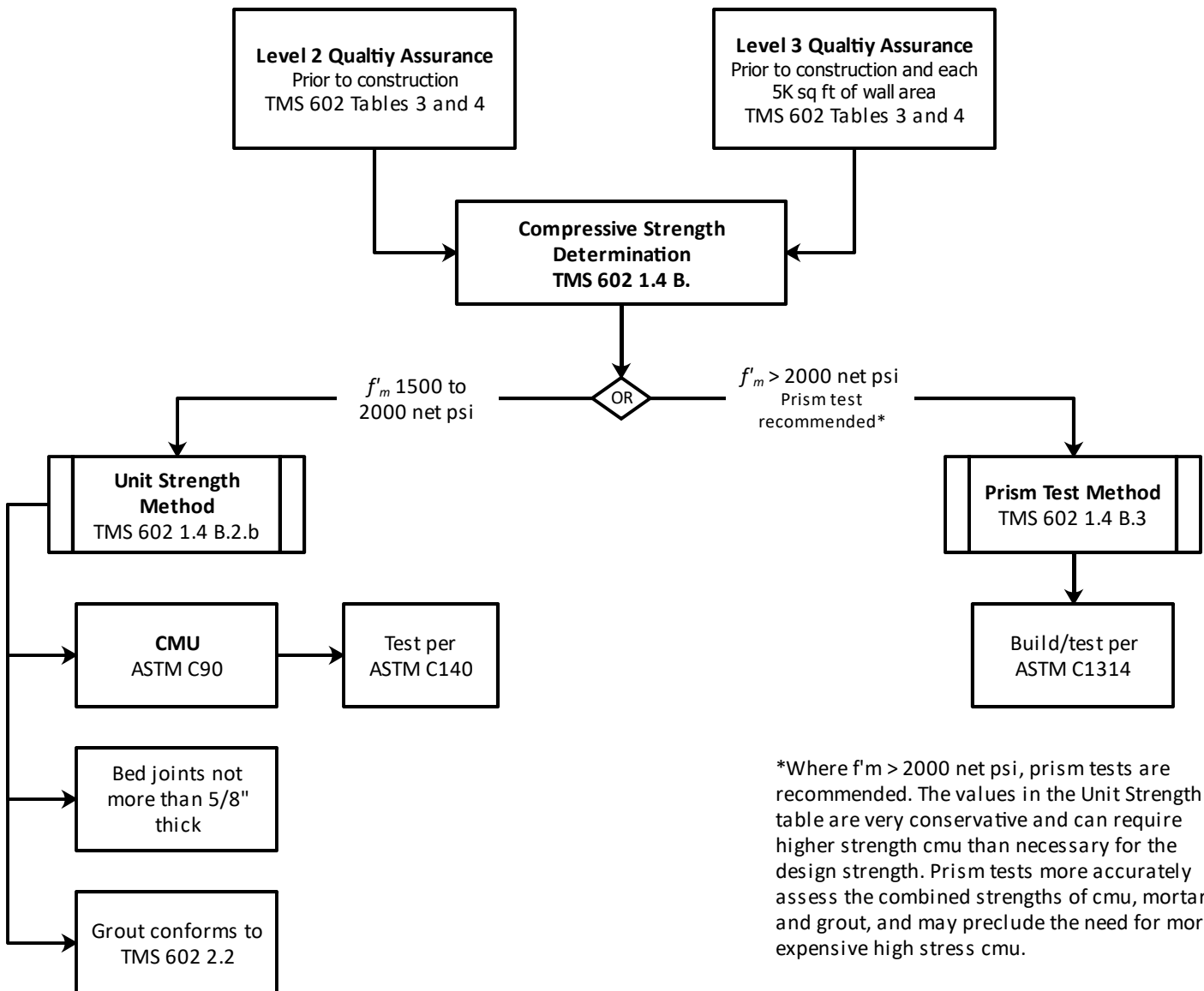
Quality Assurance - Masonry Material Submittals and Testing

CBC: 2022 California Building Code

TMS 402: 2016 Building Code Requirements for Masonry Structures and Commentary

TMS 602: 2016 Specification for Masonry Structures and Commentary

NOTE: 2022 CBC Chapter 21 also contains sections related to quality assurance that are specific to OSHPD 1R, 2 and 5, and DSA-SS/CC. Those references are not included here. As they have similarities to DSA and OSHPD requirements in Chapter 21A, they are included in Quality Assurance 2022 CBC-DSA.



*Where $f'_m > 2000$ net psi, prism tests are recommended. The values in the Unit Strength table are very conservative and can require higher strength cmu than necessary for the design strength. Prism tests more accurately assess the combined strengths of cmu, mortar, and grout, and may preclude the need for more expensive high stress cmu.