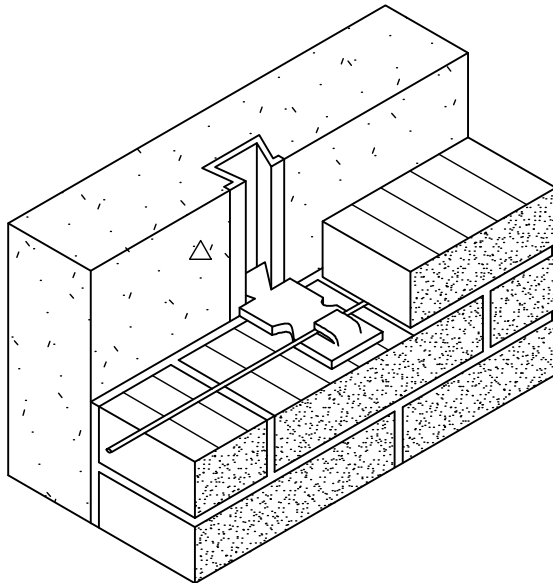


"FLEMING TYPE" MASONRY  
VENEER ANCHOR AND SLOT.



DOVETAIL TYPE BRICK ANCHOR, UTILIZES  
HEAVY HOOK TO ENCLOSE GALVANIZED WIRE.

THIS DETAIL AS SHOWN IS INTENDED TO ILLUSTRATE A GENERAL CONCEPT OR METHOD OF CONSTRUCTION. DETAILS THAT SHOW DIFFERENT OR MODIFIED CONCEPTS OR METHODS CAN BE OF EQUAL VALIDITY AND SHOULD NOT BE EXCLUDED FROM CONSIDERATION. THIS DETAIL SHALL NOT BE USED FOR CONSTRUCTION WITHOUT THE APPROVAL AND SIGNATURE OF A LICENSED DESIGN PROFESSIONAL. THE PERSON USING THIS DETAIL SHALL BE RESPONSIBLE FOR ITS COMPLETE DESIGN AND PROPER APPLICATION.

**FIGURE 35 ANCHOR SLOT VENEER TIE**